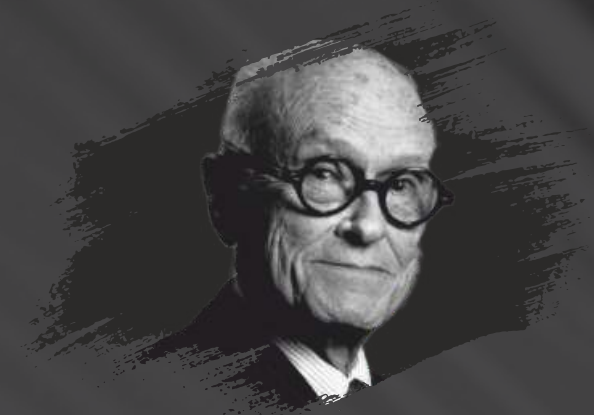


# FLU TED

---

 **sanish**  
laminate



“As an architect, you design for the present, with an awareness of the past for a future which is essentially unknown”

- Norman Foster





# FLUTED

## COLLECTION

Introducing our exquisite Flute Collection in laminates, where elegance meets functionality. Crafted with precision and attention to detail, these laminates capture the timeless allure of fluted textures. From subtle and sophisticated to bold and dramatic, our Flute Collection offers a range of designs to suit any interior aesthetic. Elevate your space with the captivating beauty of our Flute laminates and make a lasting impression.

---

 **sanish**  
laminate



# ABOUT US

---

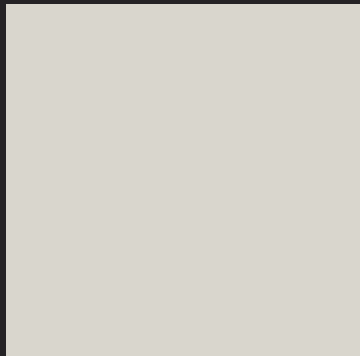
At Sanish Laminate, we are passionate about transforming spaces with our exceptional design range. We bring you a wide range of high-quality products that blend style, durability, and affordability. Our commitment to innovation and customer satisfaction sets us apart, as we strive to create laminates that enhance your environment and exceed your expectations. Experience the difference with Sanish and discover the beauty of laminates like never before.





# FLU TED

The canvas for your  
imagination to shine



6012 UG / OFF WHITE



6030 UG / SHADOW GREY



6271 SM / FLUTED ALASKA BIANCO



# FLU TED

Step into a world of  
endless inspiration  
with our designs

6295 UG

6295 UG / NATURAL RAFTERS



6295 BW / NATURAL RAFTERS





# FLU TED

Witness  
the enchantment  
unfold in your space

6291 UG

6292 UG / PORTORO CHANNELS



6291 UG / PIETRA CHANNELS



# FLU TED

Our designs breathe  
life into your surroundings  
and awaken your senses

6275 BW

6275 BW / DARKWOOD SLATS



6276 BW / OAK WOOD SLATS



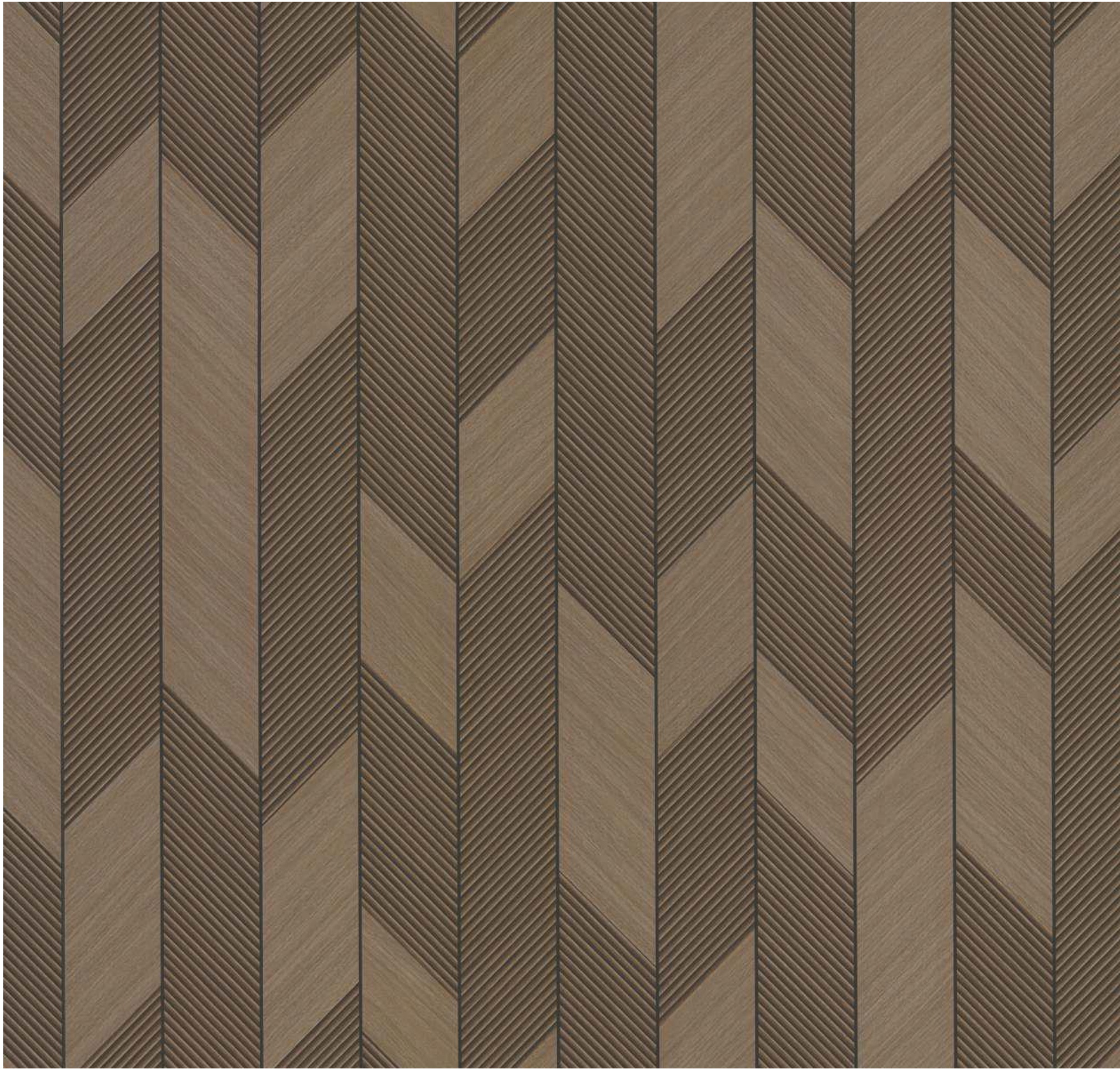
# FLU TED

Where creativity  
meets functionality,  
enhance spaces with  
style and grace

6281 SM



6086 SM / SAND



6281 SM / HARRING BONE WOOD



# FLU TED

Unleash the allure  
of laminates and enjoy  
works of art

6294 UG

6293 UG / CREASED GREY SILK

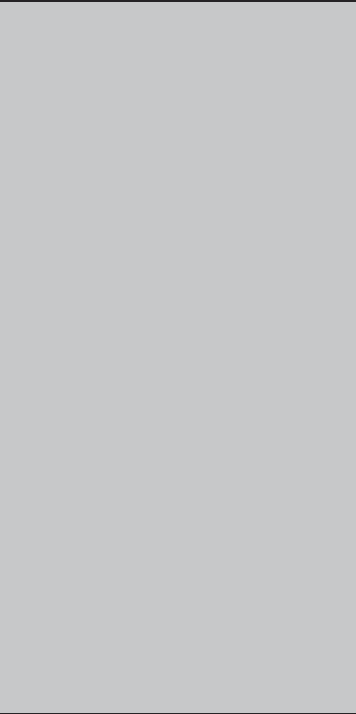


6294 UG / CREASED BROWN SILK

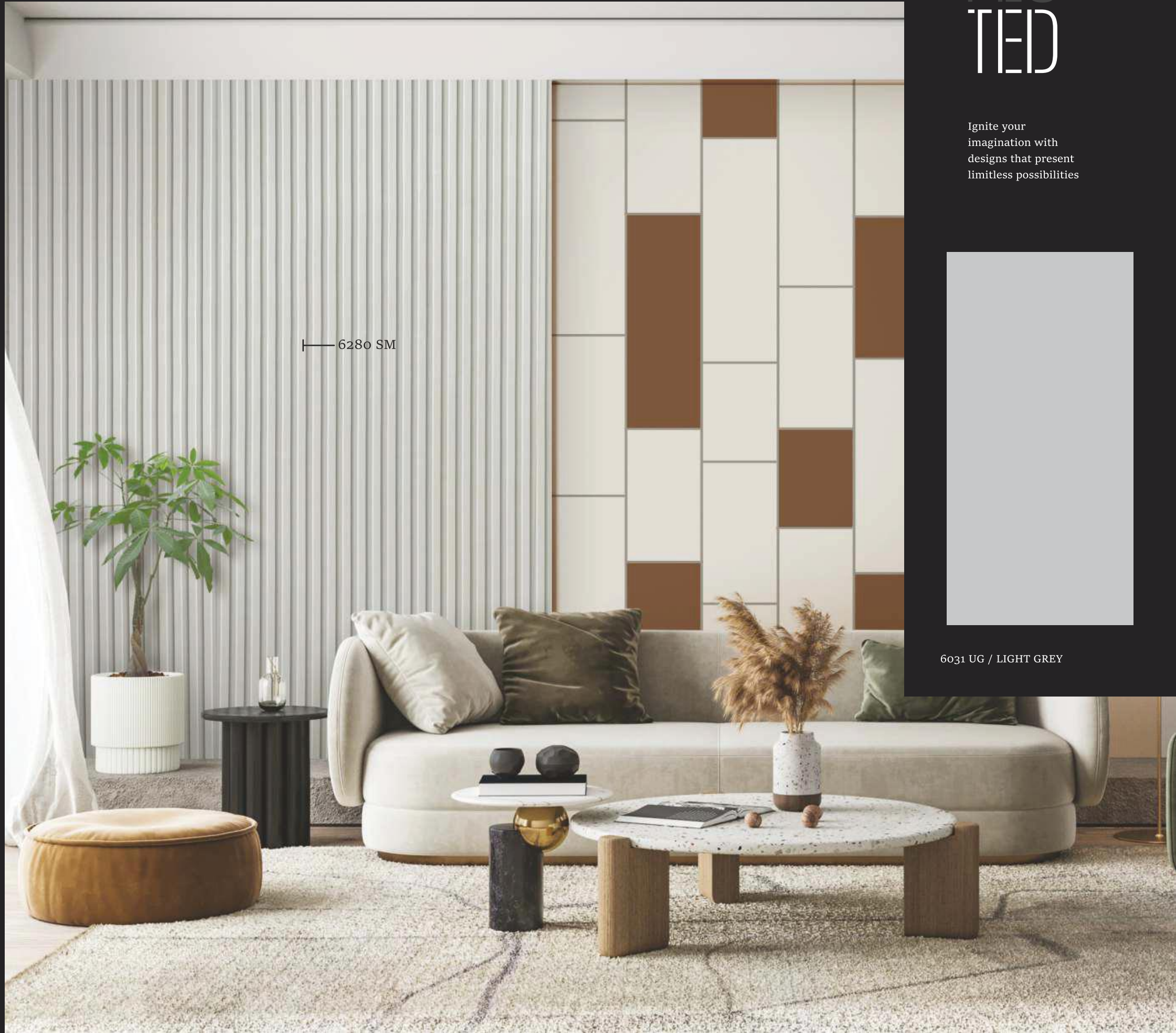


# FLU TED

Ignite your  
imagination with  
designs that present  
limitless possibilities



6031 UG / LIGHT GREY



6280 SM



6280 SM / SMOKE GREY CHANNELS





# FLU TED

Artistry and elegance  
combined with our designs  
of inimitable style

6273 UG

6274 UG / ASH LINE WOOD

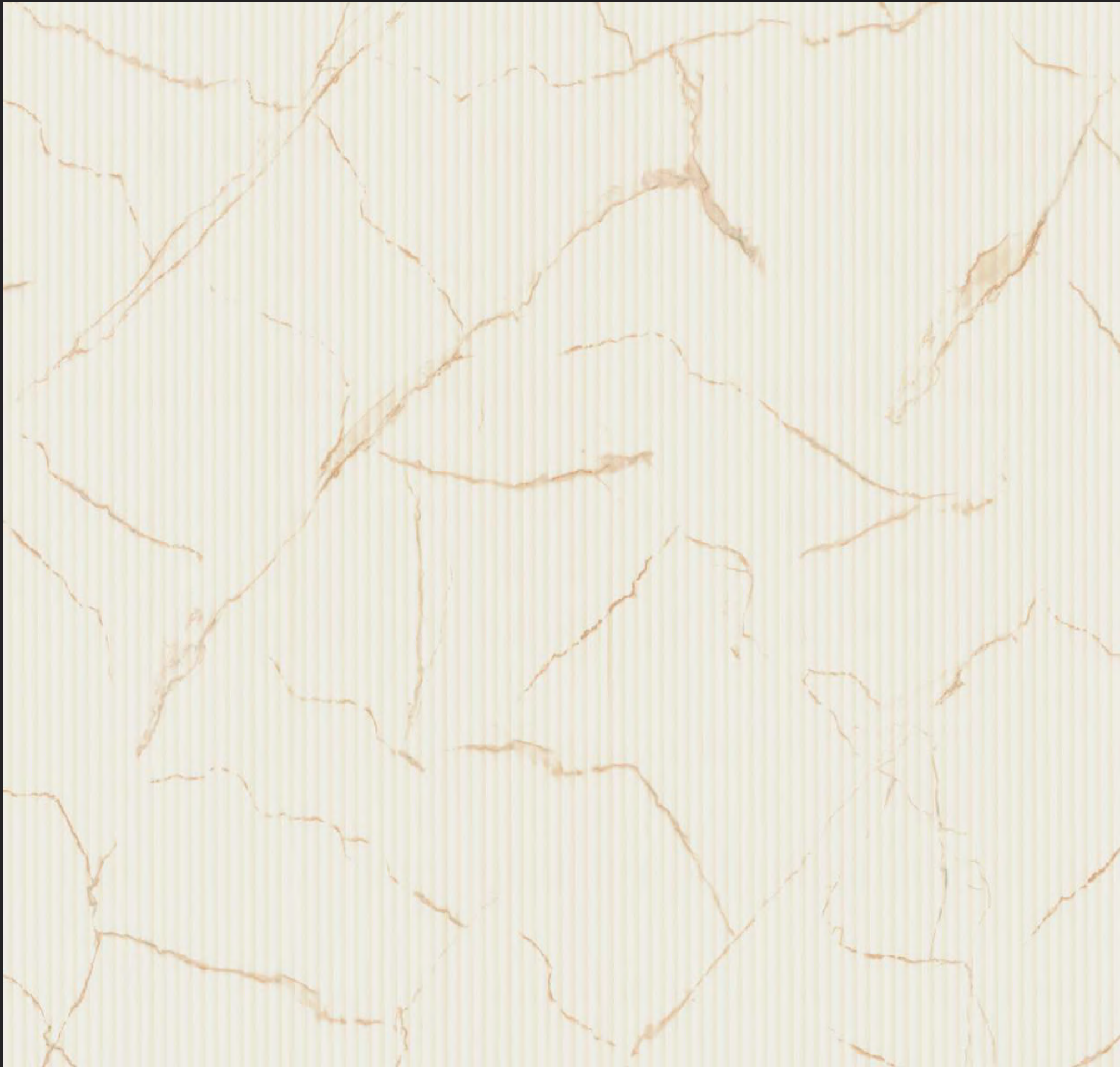


6273 UG / WALNUT LINE WOOD



# FLU TED

Versatile and sophisticated,  
revel the charisma of  
unparalleled designs



6272 UG / FLUTED ALASKA BEIGE



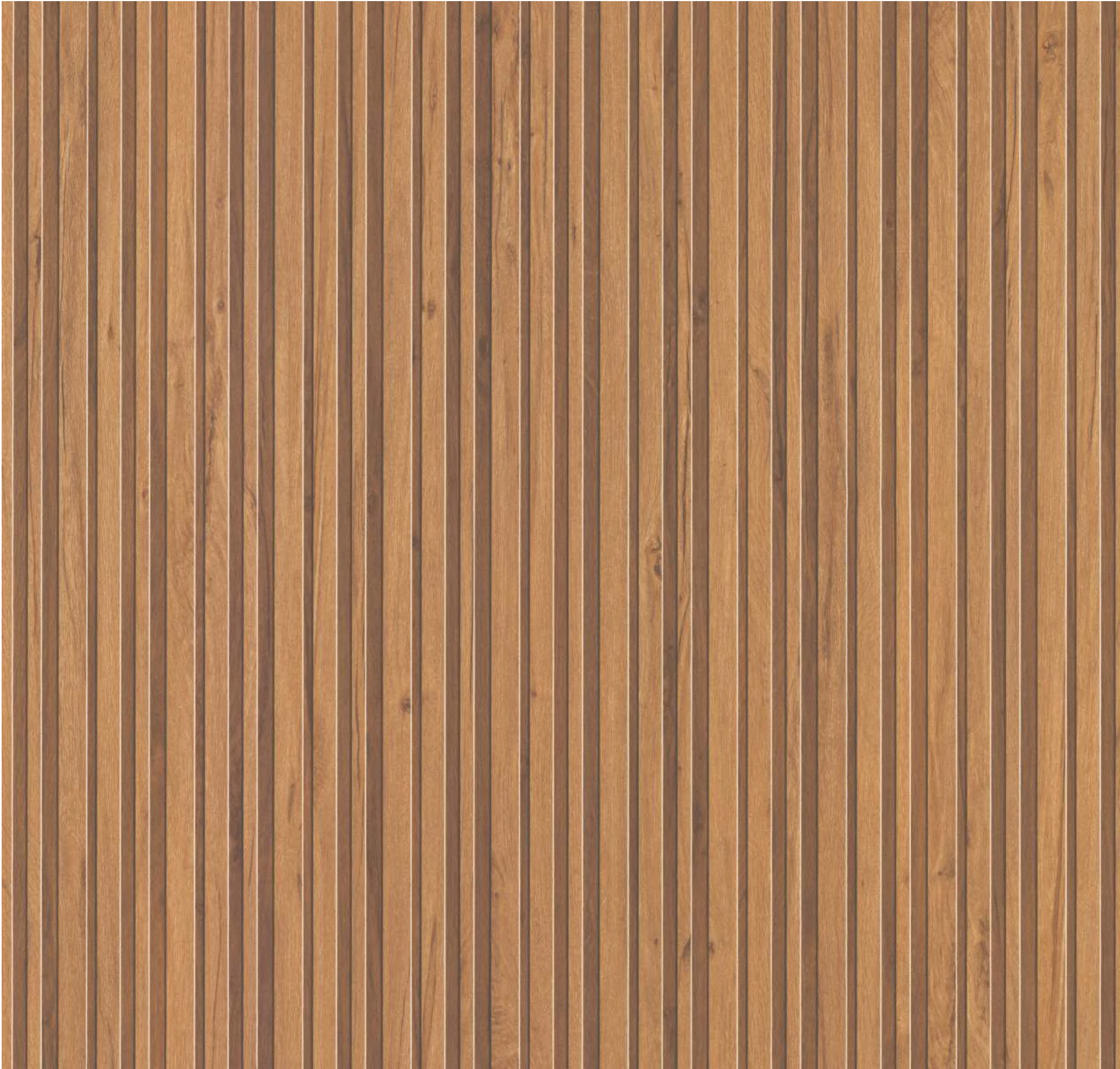
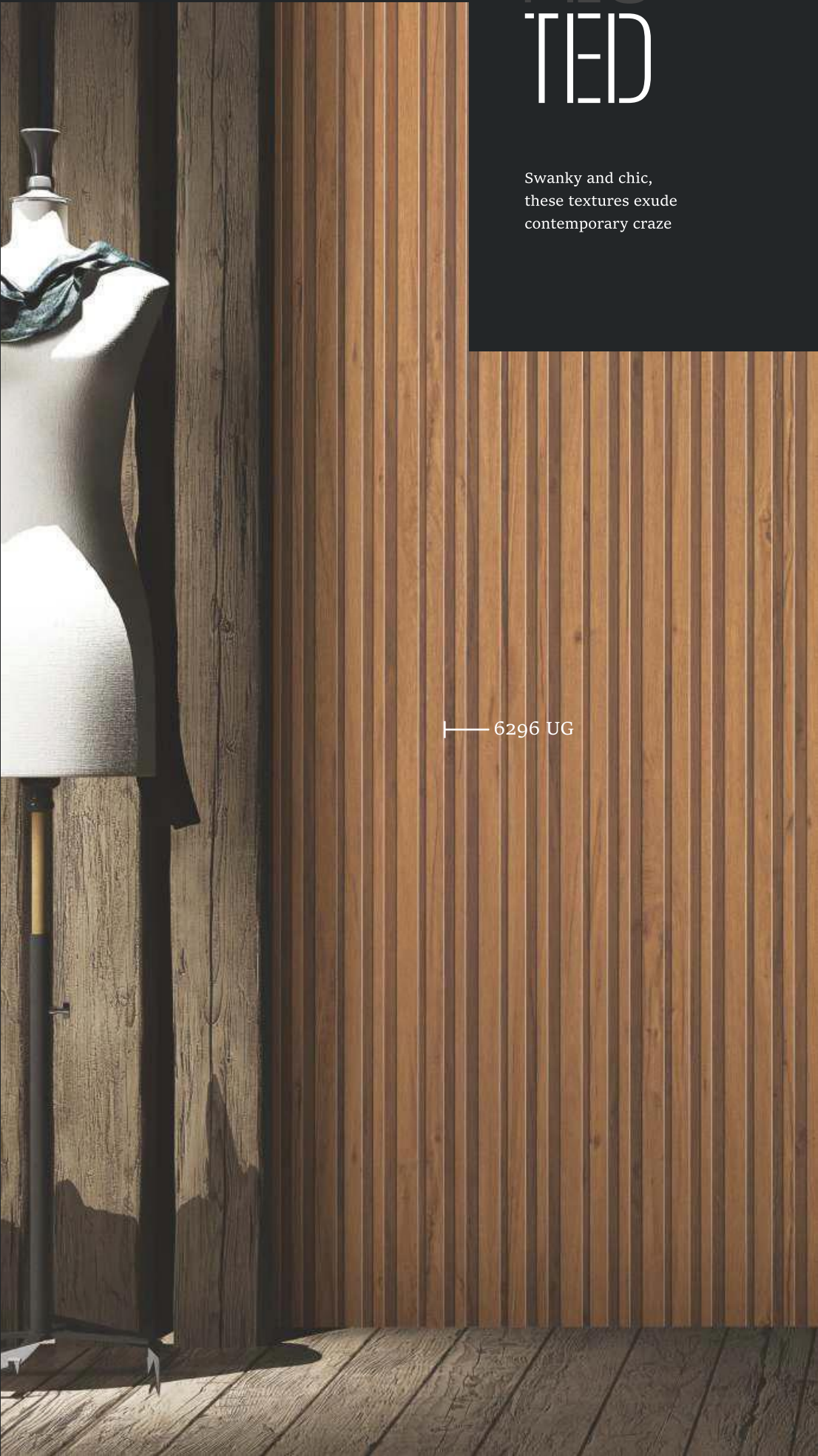
# FLU TED

Swanky and chic,  
these textures exude  
contemporary craze

6296 UG



6296 UG / OSLO RAFTERS



6296 BW / OSLO RAFTERS





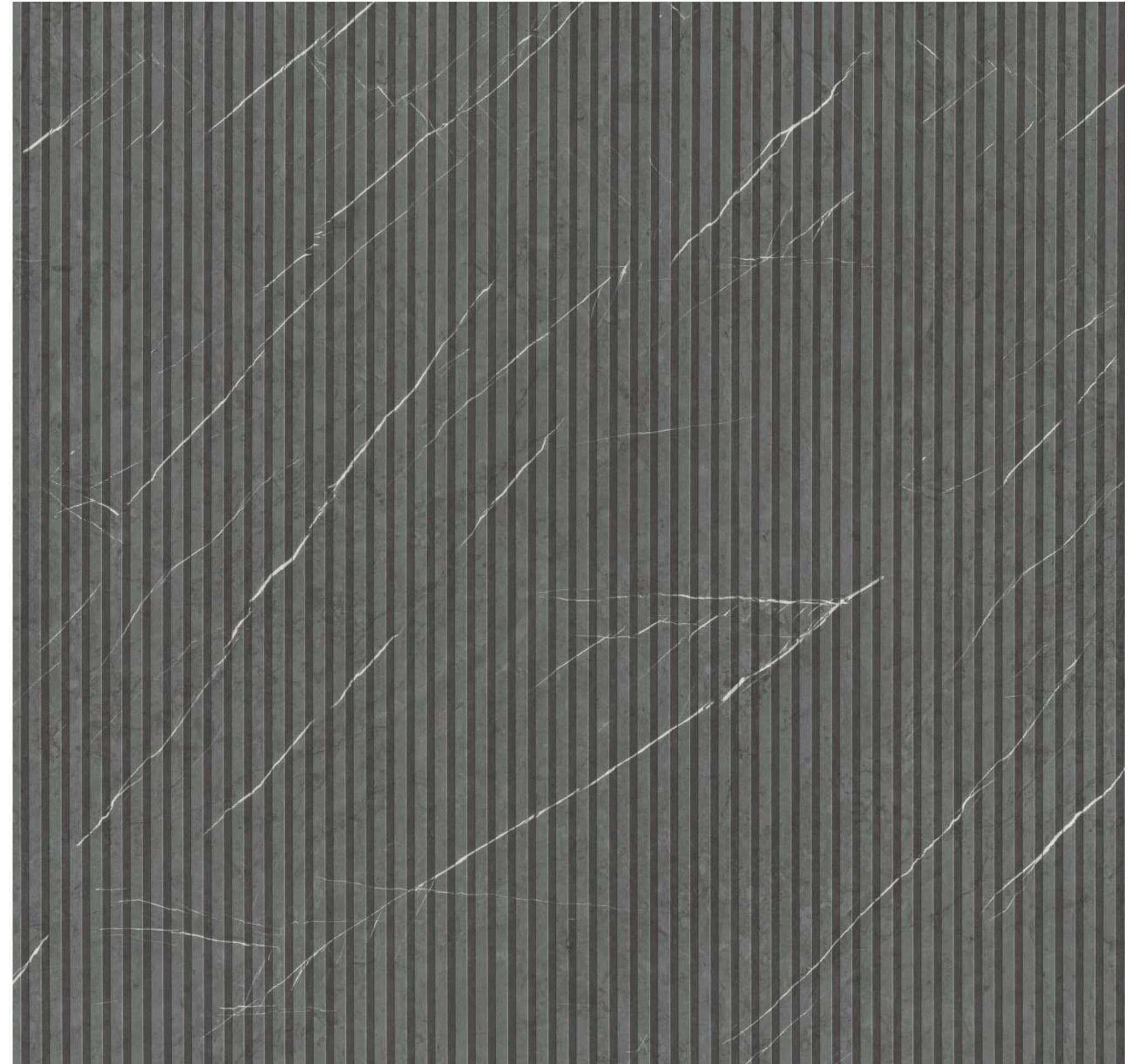
# FLU TED

Inimitable style  
now in every corner  
of your decor

6277 UG



6278 UG / CARAMEL MARBLE CHANNEL



6277 UG / GRIS MARBLE CHANNEL

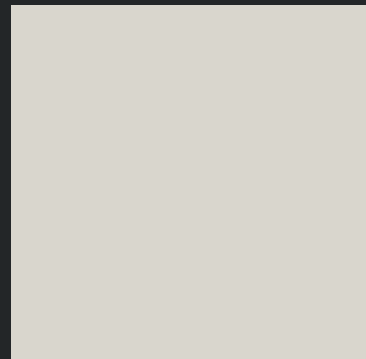




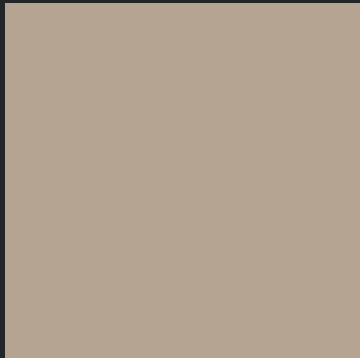
# FLU TED

Smart and alluring,  
these textures are  
perfect for your choice

6282 UG



6012 UG / OFF WHITE



6086 UG / SAND



6282 UG / GLAZE WOOD LOUVERS



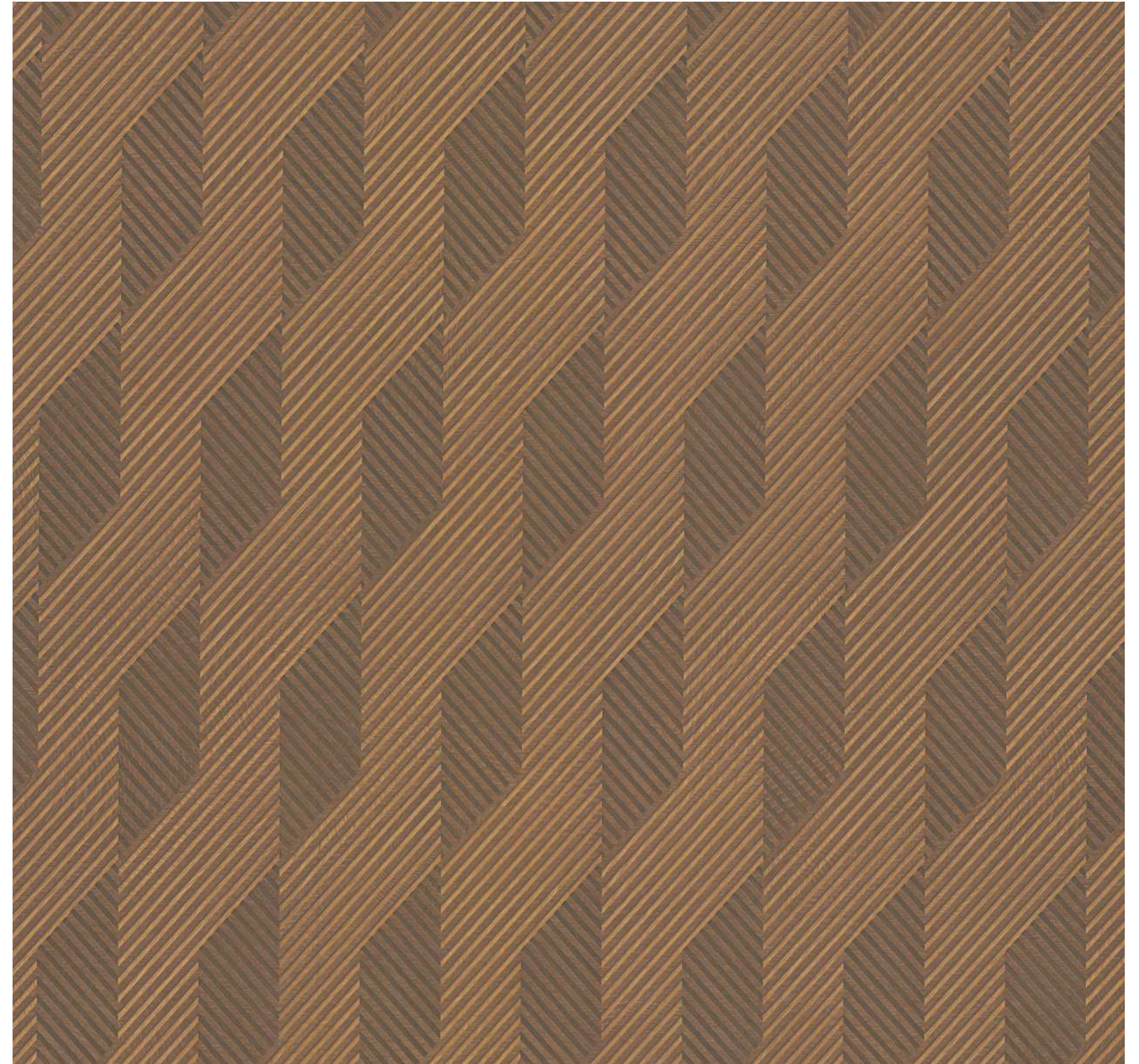
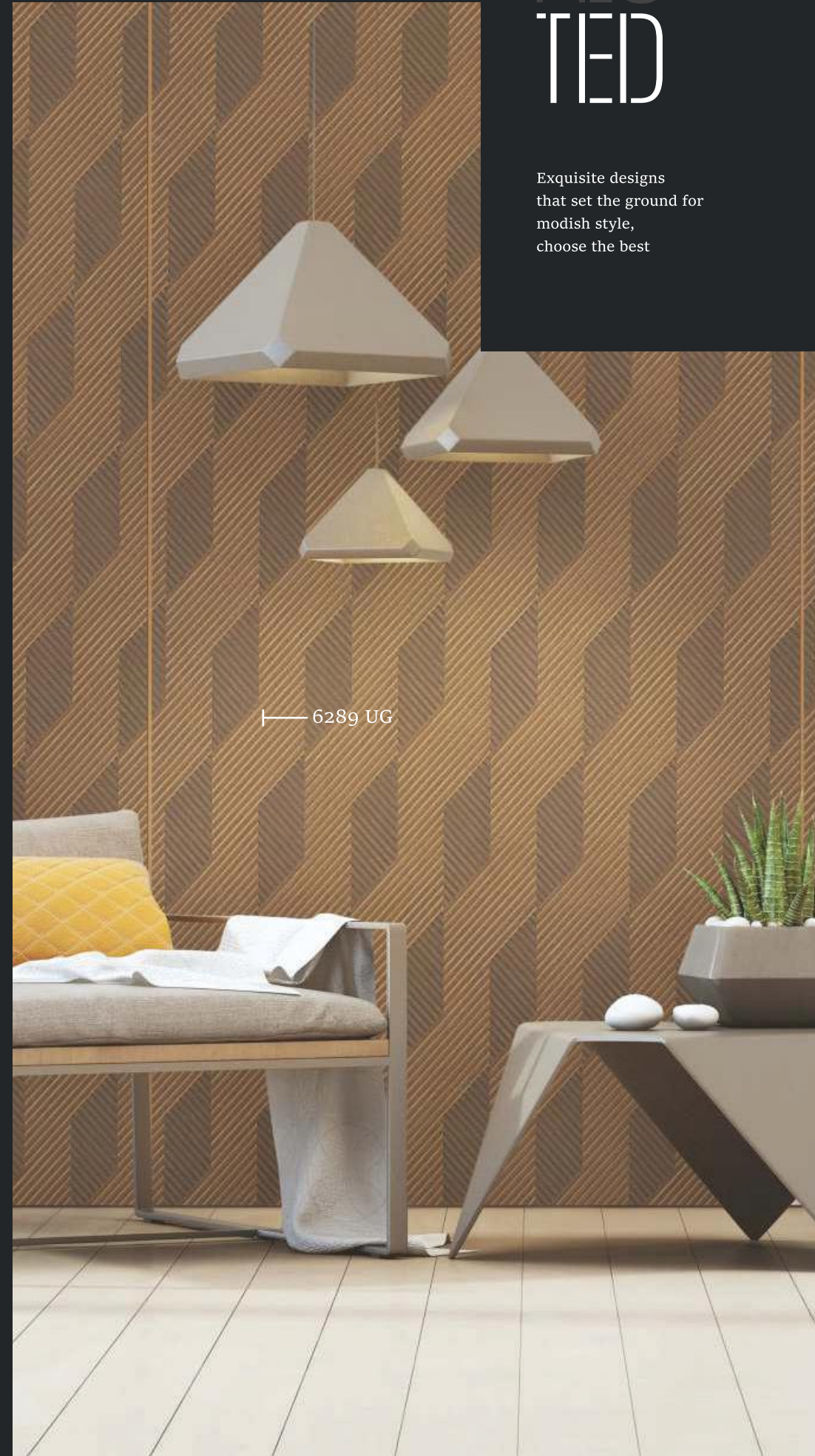
# FLU TED

Exquisite designs  
that set the ground for  
modish style,  
choose the best

6289 UG



6290 UG / GREY STICKS



6289 UG / WALNUT STICKS





# FLU TED

Premium laminate  
designs for chic and  
captivating decors

6265 UG

6286 UG / NATURAL LOUVERS



6285 UG / WALNUT LOUVERS



# FLU TED

Enchanting aura for  
the aesthete in you

6288 UG



6287 UG / BEIGE STONE REFTERS



6288 UG / GREY STONE REFTERS





# FLU TED

Classy patterns  
to suit every room  
and exude grace

6279 UG



6279 UG / MOPANI WOOD STICKS



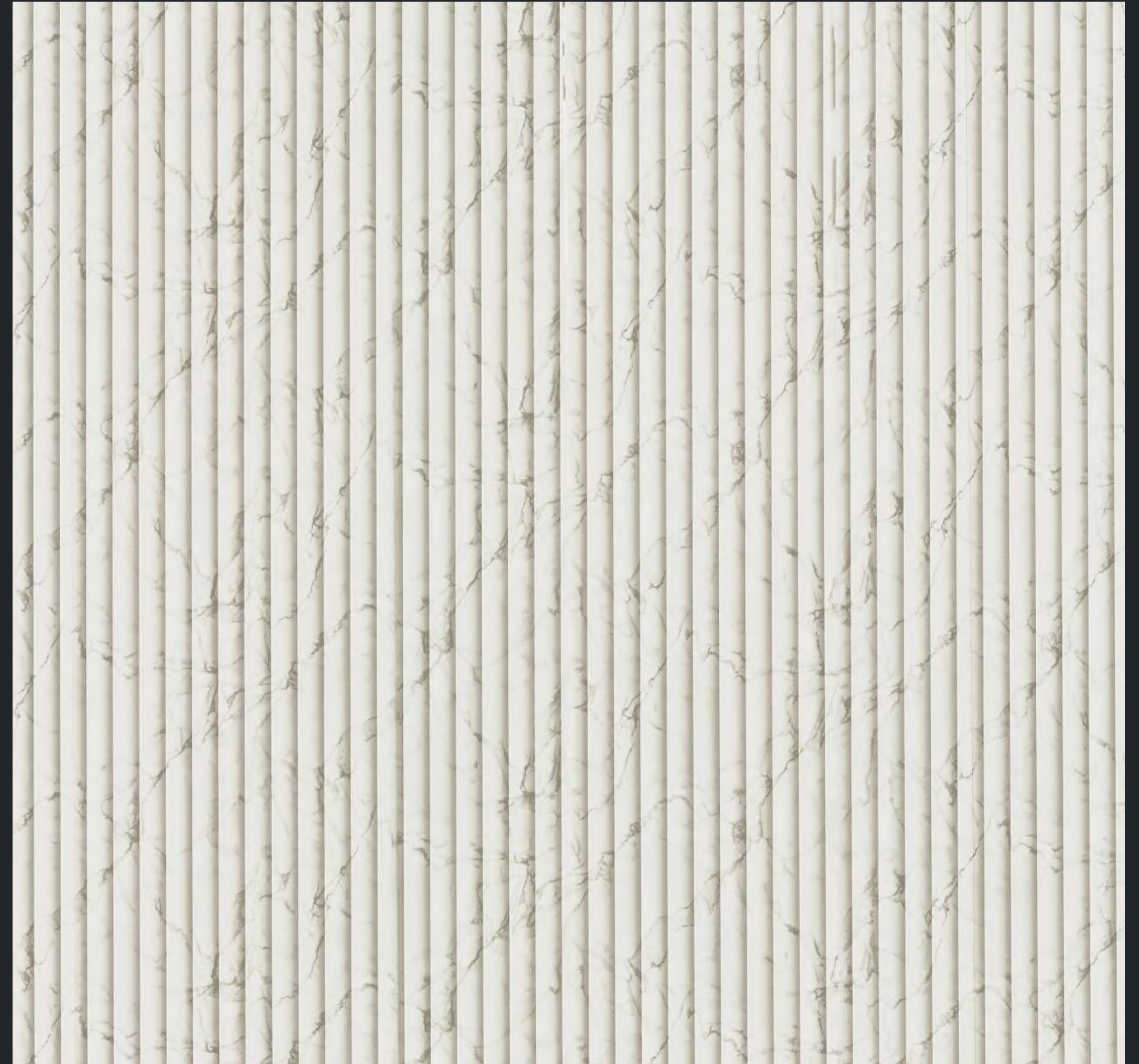
# FLU TED

Elevated perfection  
for that edge of elegance  
and wonder

6320 SM



6905 UG / STYLE LOUVER



6320 SM / FLUTED STATUARIO





# FLU TED

Splendid and spectacular,  
these designs enamor

6284 UG

6284 UG / FLUTED WOOD LIGHT



6283 UG / FLUTED WOOD DARK





INDEX

Design No.	Finish	Page No.	Design No.	Finish	Page No.
6012	UG	6	6283	UG	41
6012	UG	22	6284	UG	40
6012	UG	28	6285	UG	33
6030	UG	6	6286	UG	32
6031	UG	18	6287	UG	34
6086	SM	14	6288	UG	35
6086	UG	22	6289	UG	31
6086	UG	28	6290	UG	30
6271	SM	7	6291	UG	11
6272	UG	23	6292	UG	10
6273	UG	21	6293	UG	16
6274	UG	20	6294	UG	17
6275	BW	12	6295	UG	8
6276	BW	13	6295	BW	9
6277	UG	27	6296	UG	24
6279	UG	37	6296	BW	25
6280	SM	19	6320	SM	39
6281	SM	15	6378	UG	26
6282	UG	29	6905	UG	38

TECHNICAL SPECIFICATION



PROPERTIES	SPECIFIED VALUES AS PER IS:2046-1995	SANISH CONFORMS
Resistance to surface Wear	350 (revolution)	✓
Resistance to immersion in boiling water - Mass increase (%) - Thickness increase	10.0 Max 11.8 Max	✓ ✓
Resistance to dry heat 180 degrees C	Not worse than 4	✓
Dimensional stability at deviated temperature - Longitudinal (%) - Transverse (%)	0.5 Max. 0.9 Max.	✓ ✓
Dimensional stability At 20 degrees C - Longitudinal (%) - Transverse (%)	0.375 Max. 0.60 Max.	✓ ✓
Resistance to impact by small diameter ball	20N Min.	✓
Resistance to cracking	Not worse than 4	✓
Resistance to scratching	2N Min.	✓
Resistance to staining	Not worse than 5	✓
Resistance to colour change (wool standards) - In Xenon arc light - In enclosed Carbon arc light	Not worse than 6 Not worse than 5	✓ ✓
Resistance to cigarette burns	Not worse than 3	✓
Resistance to steam	Not worse than 4	✓
Appearance	Should be free from foreign particles	✓

*All tests may not be valid for embossed & metallic laminates		 
Product:	High Pressure Decorative Laminated sheets	
Size:	2440mm x 1220mm (8'x4')	
Product conformity to:	British European Standard - BS EN 438, American Nema ID-3, BIS (Bureau of Indian Standard) is 2046.	
Limited Warranty:	SANISH warrants that its products are reasonably free from manufacturing defects. The products when properly used, will comply, with normal deviations, to related manufacturing specification. This warranty shall be limited only to the original buyer for a period of one (1) year from the date of dispatch by SANISH. It excludes damage resulting from accidents, abuse or lack of care, improper use and/ or any alternation. It is recommended that the product must be inspected prior to installation and our liability will be limited to the extent of the cost of the product only. SANISH Laminates are used for various applications, without the possibility of control over the manufacturing of the finished product. The company does not assume obligations or liabilities arising from the furnishing, sale, installation or repair, use or subsequent sale of any product, to any person or entity.	
Care & Maintenance:	Cleaning should be carried out with a soft moist cloth and warm soap solution. Do not use detergents containing abrasive particles or excess soda.	
Note:	Samples presented are indicative of colour, pattern and surface finish but not actual thickness. For actual thickness of product, please check the sample attached above or check our actual products with our distributors/ dealers/ stock point or SANISH Gallery.	

